



Pacific  
Community  
Communauté  
du Pacifique



**PIRFO**

***Whales, dolphins and sea birds ID cards***  
*for Pacific Islands Regional Fisheries Observers*

Prepared by the Pacific Community  
Noumea, New Caledonia, 2016

These identification cards are produced by the Pacific Community (SPC) to help with the identification of species of special interest (protected species) encountered by Fisheries Observers while onboard commercial tuna boats that fish in the western and central Pacific Ocean (WCPO). The species included in these cards are the ones commonly recorded by observers on tuna vessels operating in the WCPO. The cards can be easily accessed by observers while working on deck during fishing operations to verify and correctly identify species. The cards also assist in training observers operating within the Western and Central Pacific Fisheries Commission Convention Area.

**Printing of these cards was made possible through financial assistance provided by the Japan Trust Fund.**

This project was coordinated by SPC's Oceanic Fisheries Programme Fisheries Monitoring Section and Fisheries Information Section. Colour illustrations by Hazel Adams (p. 4-8), Youngmi Choi (p. 11-38); black and white illustrations courtesy of the Food and Agriculture Organization of the United Nations (FAO).

This publication is based on the *Marine species identification manual for horizontal longline fishermen* by Chapman et al. (2006). First published – 2006. Original text: English

#### Pacific Community Cataloguing-in-publication data

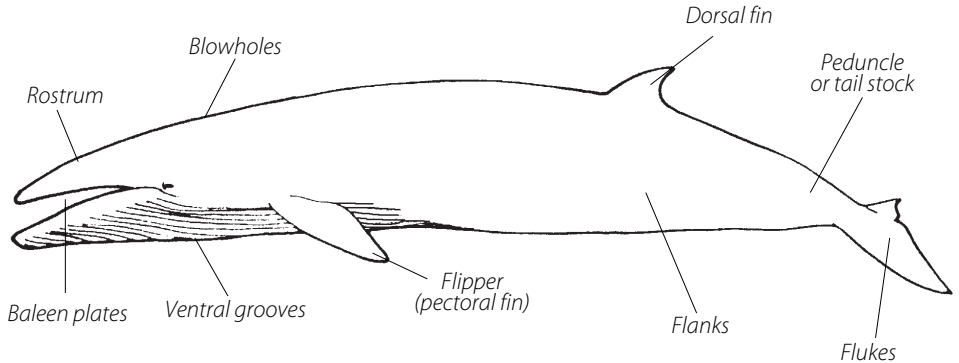
Pacific Islands Regional Fisheries Observers (PIRFO): Whales, dolphins and sea birds ID cards for Pacific Islands Regional Fisheries Observers / prepared by the Pacific Community

- |   |                                       |
|---|---------------------------------------|
| 1. Marine fishes – Identification – Oceania.  | 4. Fishery management – Oceania.      |
| 2. Marine fishes – Classification – Oceania.  | 5. Fishes – Identification – Oceania. |
| 3. Marine mammals – Identification – Oceania. |                                       |

I. Title II. Pacific Community  
597.0995  
ISBN: 978-982-00-0994-3

AACR2

# Baleen whales



# Blue whale

*Balaenoptera musculus*

*Small dorsal fin located far back on the body*



*Body blue/grey mottled colouration*

BLW

*Maximum length: 30 m*

# Fin whale

*Balaenoptera physalus*



Single median ridge  
on the rostrum



White lower right jaw

FIW

Maximum length: 24 m

# Sei whale

*Balaenoptera borealis*

Large falcate dorsal fin



Single distinct ridge  
on the rostrum

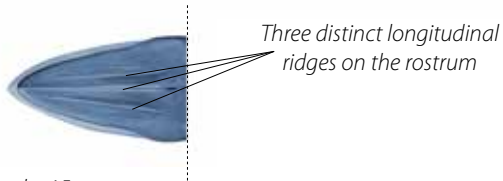


SIW

Maximum length: 18 m

# Bryde's whale

*Balaenoptera edeni*

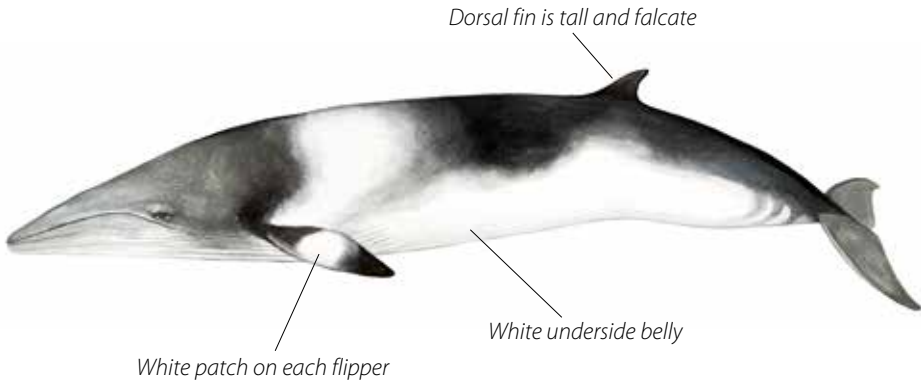


BRW

Maximum length: 15 m

# Minke whale

*Balaenoptera acutorostrata*



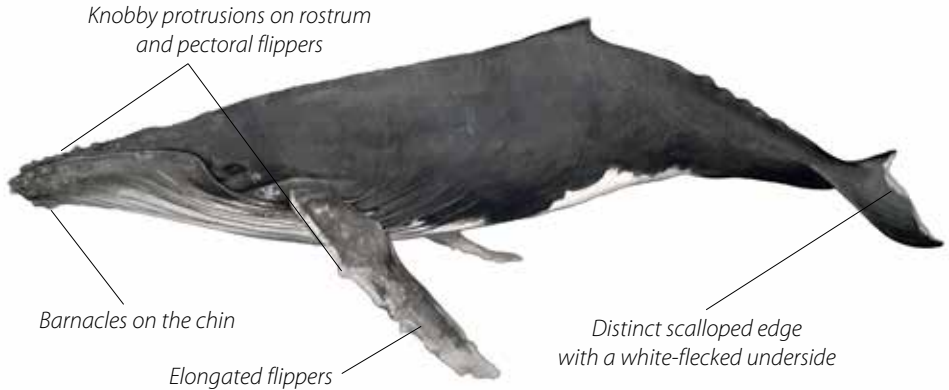
MIW

Maximum length: 9 m



# Humpback whale

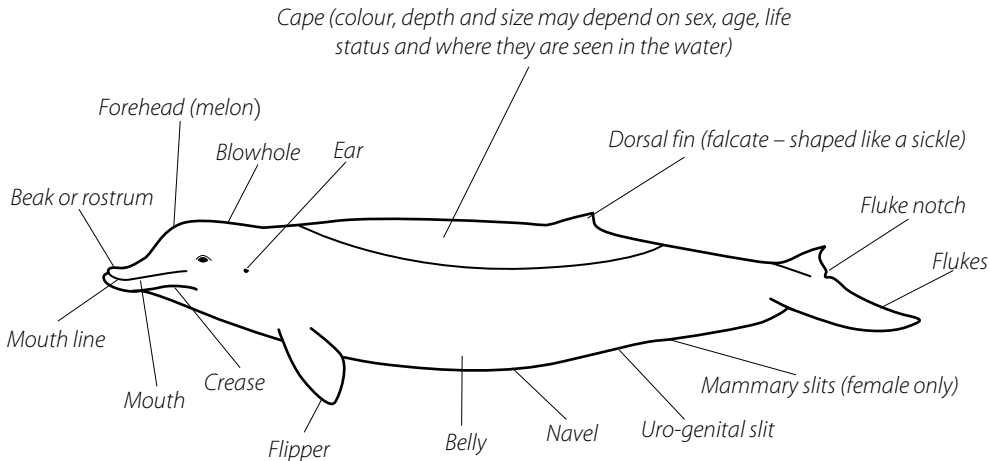
*Megaptera novaeangliae*



HUW

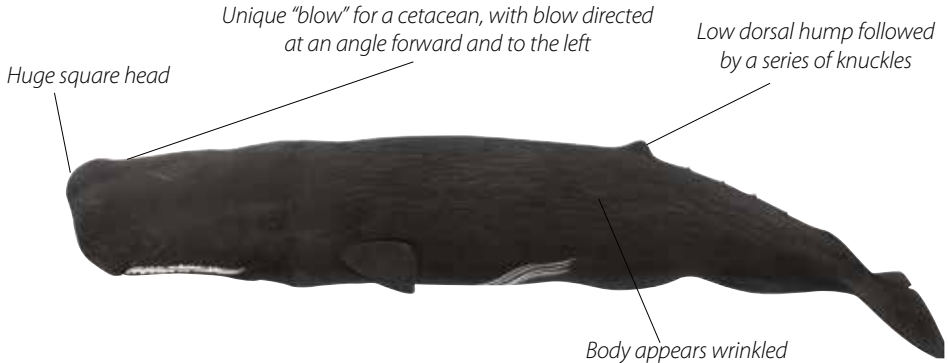
Maximum length: 16 m

# Toothed whales



# Sperm whale

*Physeter macrocephalus*



SPW

Maximum length: 18 m

# Pygmy sperm whale

*Kogia breviceps*

Dorsal fin tiny, located after mid-back

Body may appear wrinkled

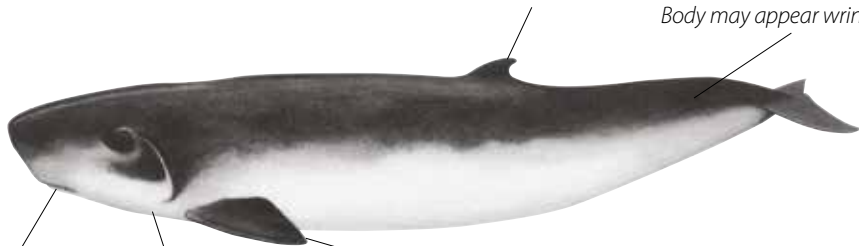
Small narrow jaw

No creases on throat

Short flippers located far forward on body

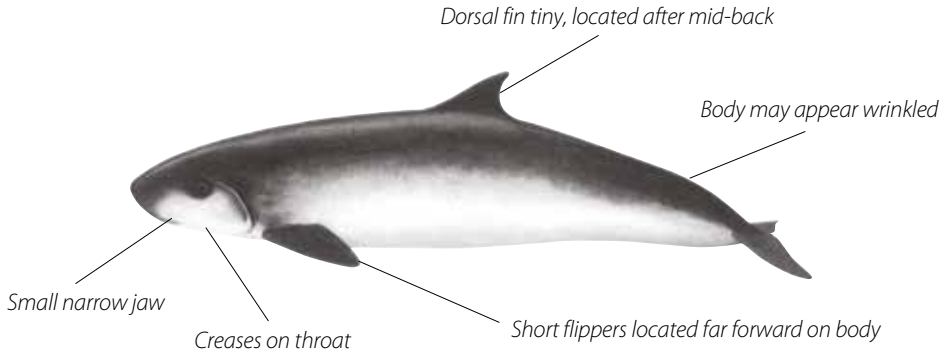
PYW

Maximum length: 3.7 m



# Dwarf sperm whale

*Kogia simus*

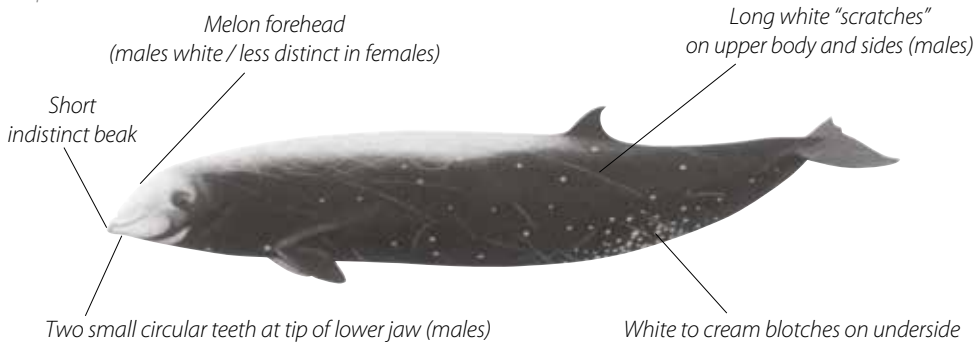


DWW

Maximum length: 2.7 m

# Cuvier's beaked whale

*Ziphius cavirostris*

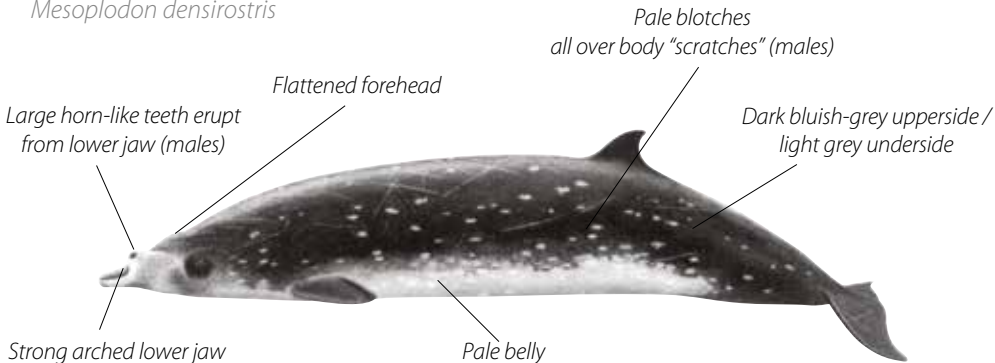


BCW

Maximum length: 7 m

# Blainville's beaked whale

*Mesoplodon densirostris*



**BBW**

Maximum length: 5 m

# False killer whale

*Pseudorca crassidens*

Dorsal fin with pointed tip, located mid-back

Indistinct cape when viewed from boat

Dark body

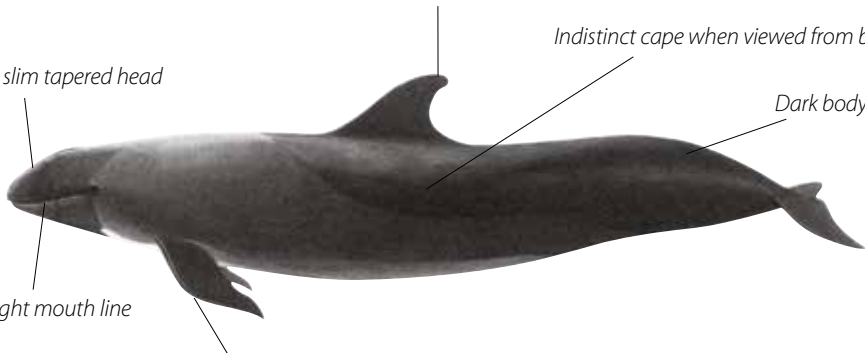
Long slim tapered head

Straight mouth line

Distinctive hump on front margin of flippers



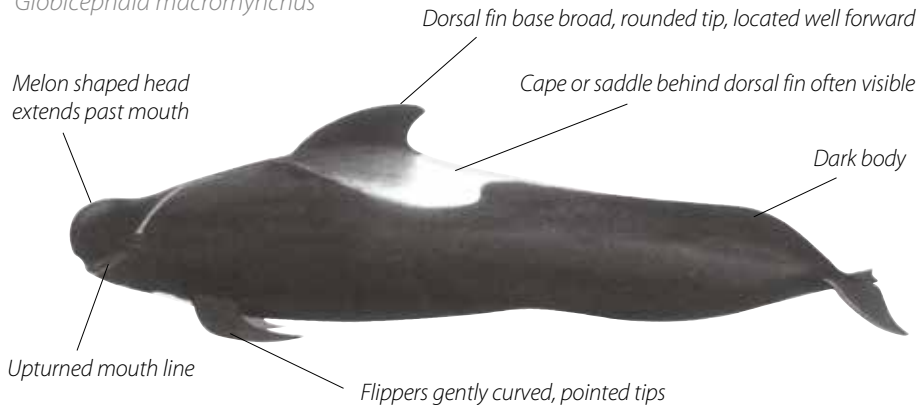
Maximum length: 6 m





# Short finned pilot whales

*Globicephala macrorhynchus*

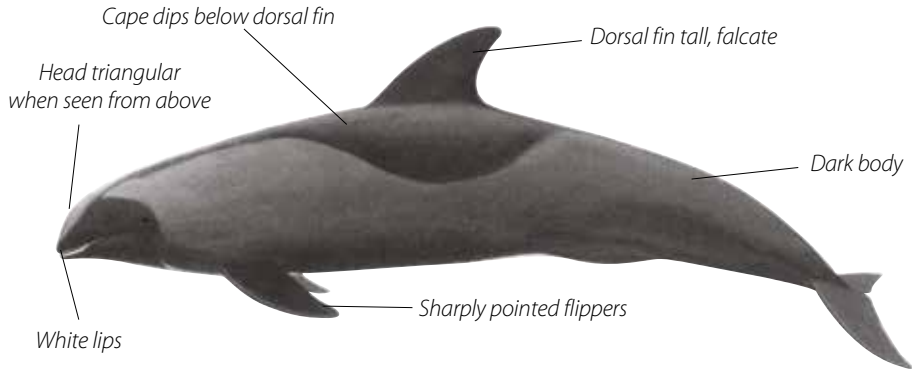


SHW

Maximum length: 6 m

# Melon-headed whale

*Peponocephala electra*

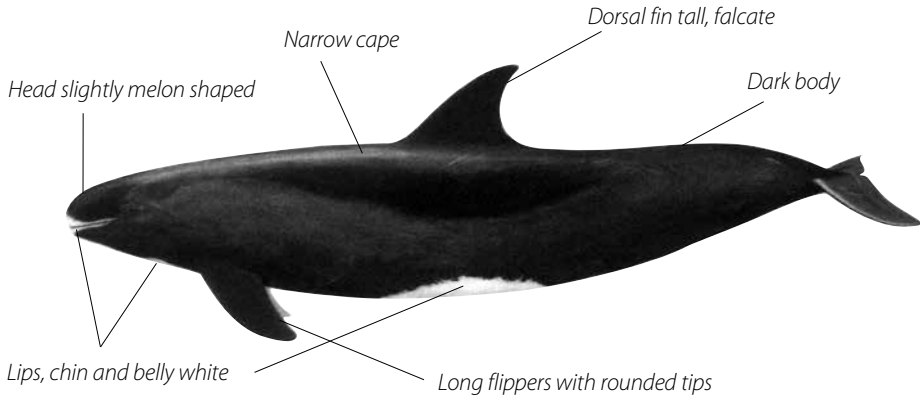


MEW

Maximum length: 2.7 m

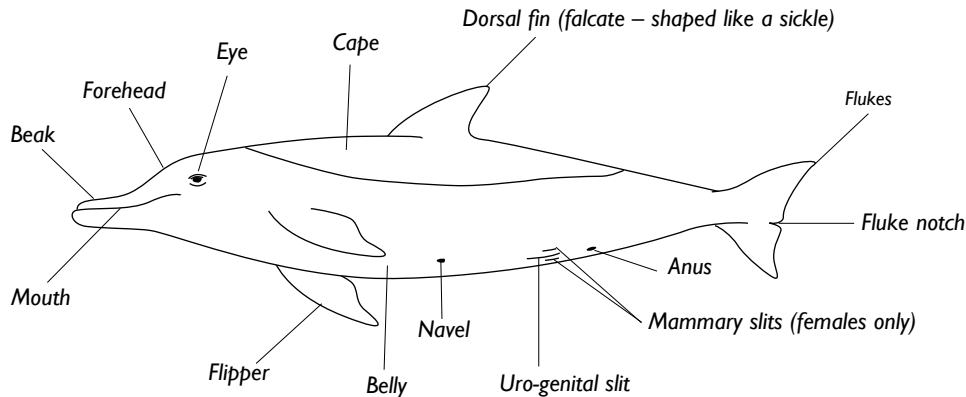
# Pygmy killer whale

*Feresa attenuata*



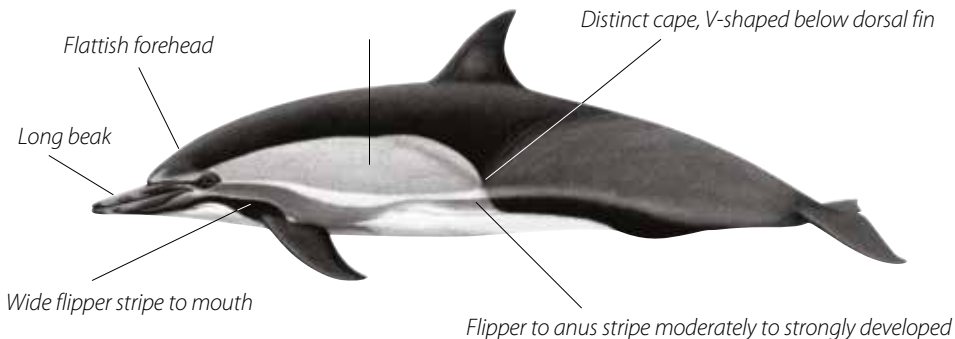
Maximum length: 3 m

# Dolphins



# Long beaked common dolphin

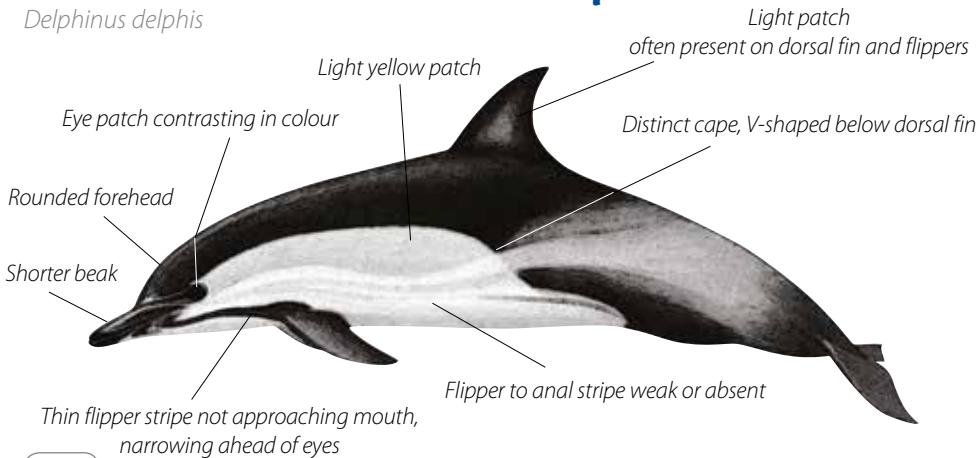
*Delphinus capensis*



Maximum length: 2.4 m

# Short beaked common dolphin

*Delphinus delphis*

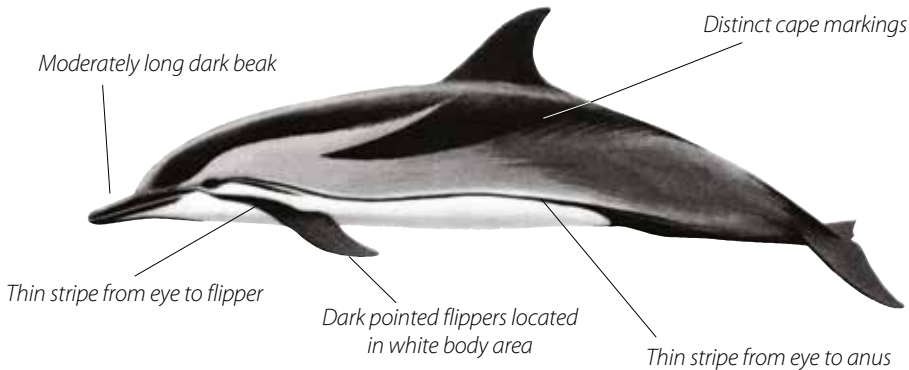


DCO

Maximum length: 2 m

# Striped dolphin

*Stenella coeruleoalba*

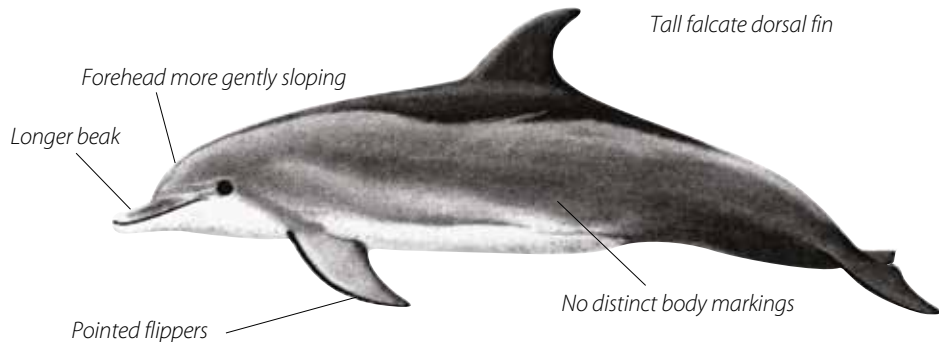


DST

Maximum length: 2.6 m

# *Indo-Pacific bottle nose dolphin*

*Tursiops aduncus*



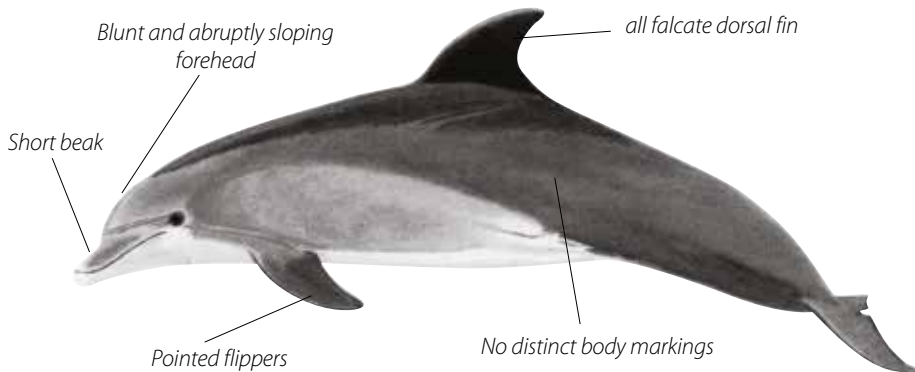
DBZ

Maximum length: 2.7 m



# Common bottle-nose dolphin

*Tursiops truncatus*

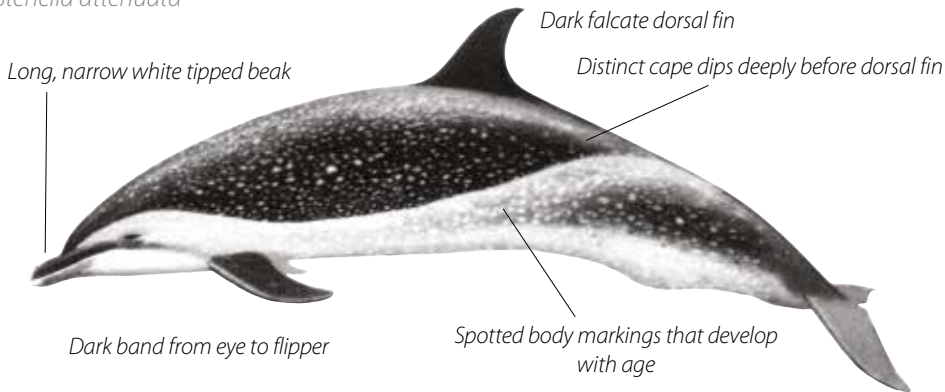


DBO

Maximum length: 3.8 m

# Pantropical spotted dolphin

*Stenella attenuata*

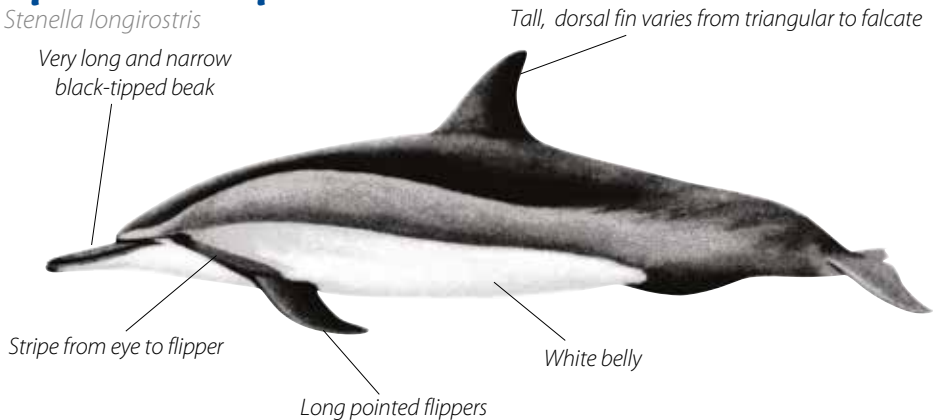


DPN

Maximum length: 2.6 m

# Spinner dolphin

*Stenella longirostris*

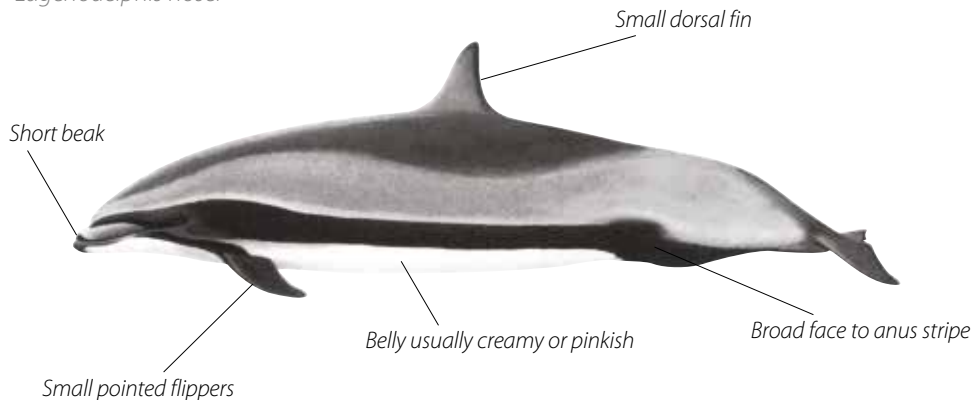


DSI

Maximum length: 2.1 m

# Fraser's dolphin

*Lagenodelphis hosei*

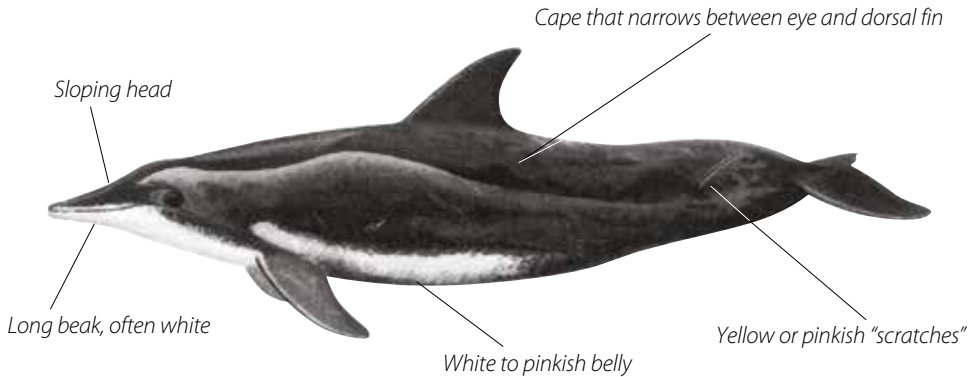


**FDR**

Maximum length: 2.7 m

# Rough-toothed dolphin

*Steno bredanensis*

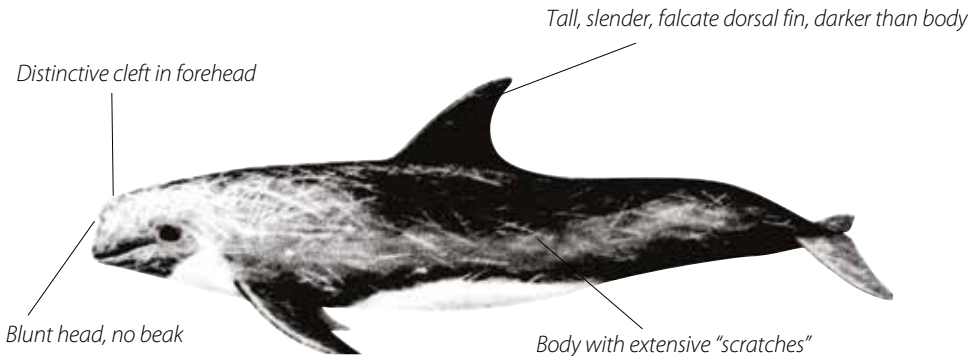


RTD

Maximum length: 2.8 m

# Risso's dolphin

*Grampus griseus*



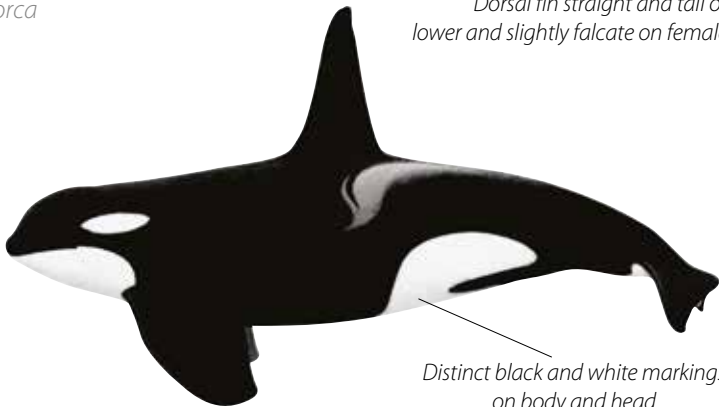
DRR

Maximum length: 4 m

# Killer whale

*Orcinus orca*

*Dorsal fin straight and tall on males,  
lower and slightly falcate on females and juveniles*

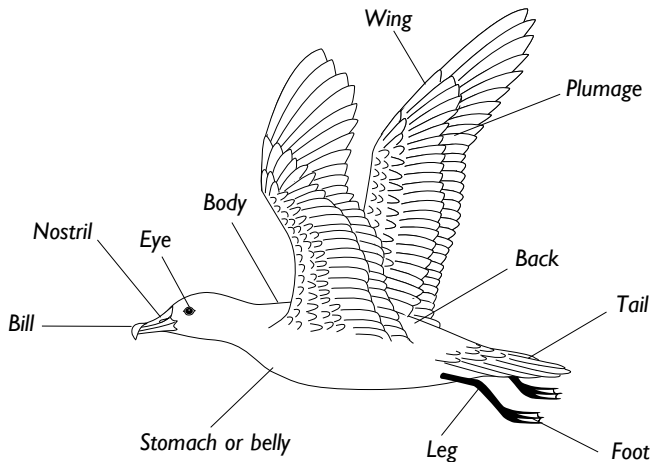


*Distinct black and white markings  
on body and head*

KIW

*Maximum length: 9 m*

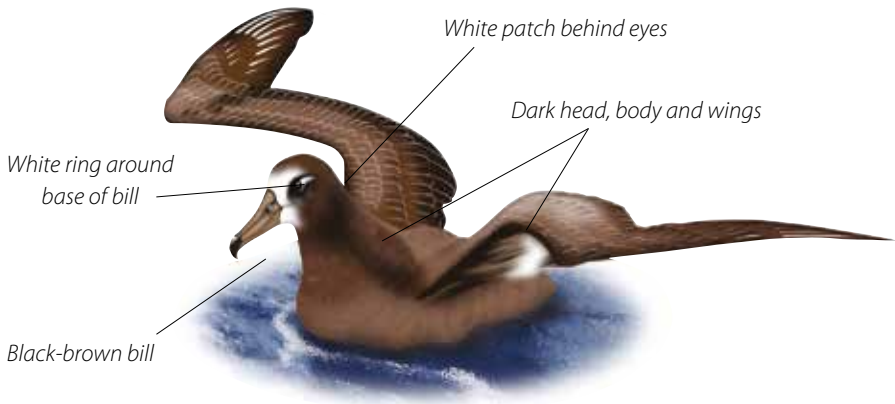
# Sea birds





# Black-footed albatross

*Diomedea nigripes*



DKN

Northern hemisphere distribution

# Laysan albatross

*Diomedea immutabilis*



DIZ

Northern hemisphere distribution

# Albatrosses

Diomedidae

*Species in this family have:*

- Large hooked bill
- Large birds
- Wing span up to 3.5 m
- External nostrils at base of bill, one on each side



ALZ

# Boobies and gannets

Sulidae



*Species in this family have:*

- Large birds
- Long wings with wing span up to 2.2 m
- Wedge-shaped tail
- Stout conical bill

# Petrels and shearwaters

Procellariidae

*Species in this family have:*

- *Most birds smaller in size (wing span up to 1.5 m, but mainly less than 1 m) except for giant petrel (wing span up to 2.5 m)*
- *Nostrils united in a single tube on top of bill*



PRX

# Gulls, terns and skuas

Laridae

*Species in this family have:*

- Generally smaller birds (wing span up to 1 m), with skuas larger (wing span up to 1.8 m)
- Nostrils are plain openings on either side of bill
- Most birds have grey and white plumage, some with black on head and wings



LRD

## ***Index***

|                                   |    |                                   |    |                              |    |
|-----------------------------------|----|-----------------------------------|----|------------------------------|----|
| Albatrosses                       | 33 | Fraser's dolphin                  | 26 | <i>Pseudorca crassidens</i>  | 14 |
| <i>Balaenoptera acutorostrata</i> | 6  | Gannets                           | 34 | Pygmy killer whale           | 17 |
| <i>Balaenoptera borealis</i>      | 4  | <i>Globicephala macrorhynchus</i> | 15 | Pygmy sperm whale            | 10 |
| <i>Balaenoptera edeni</i>         | 5  | <i>Grampus griseus</i>            | 28 | Risso's dolphin              | 28 |
| <i>Balaenoptera musculus</i>      | 2  | Gulls                             | 36 | Rough-toothed dolphin        | 27 |
| <i>Balaenoptera physalus</i>      | 3  | Humpback whale                    | 7  | Sei whale                    | 4  |
| Black-footed albatross            | 31 | Indo-Pacific bottle nose dolphin  | 22 | Shearwaters                  | 35 |
| Blainville's beaked whale         | 13 | Killer whale                      | 29 | Short beaked common dolphin  | 20 |
| Blue whale                        | 2  | <i>Kogia breviceps</i>            | 10 | Short finned pilot whales    | 15 |
| Boobies                           | 34 | <i>Kogia simus</i>                | 11 | Skuas                        | 36 |
| Bryde's whale                     | 5  | <i>Lagenodelphis hosei</i>        | 26 | Sperm whale                  | 9  |
| Common bottle-nose dolphin        | 23 | Laysan albatross                  | 32 | Spinner dolphin              | 25 |
| Cuvier's beaked whale             | 12 | Laridae                           | 36 | <i>Stenella attenuata</i>    | 24 |
| <i>Delphinus capensis</i>         | 19 | Long beaked common dolphin        | 19 | <i>Stenella coeruleoalba</i> | 21 |
| <i>Delphinus delphis</i>          | 20 | Melon-headed whale                | 16 | <i>Stenella longirostris</i> | 25 |
| <i>Diomedea immutabilis</i>       | 32 | <i>Megaptera novaeangliae</i>     | 7  | <i>Steno bredanensis</i>     | 27 |
| <i>Diomedea nigripes</i>          | 31 | <i>Mesoplodon densirostris</i>    | 13 | Striped Dolphin              | 21 |
| Diomedeidae                       | 33 | Minke whale                       | 6  | Sulidae                      | 34 |
| Dwarf sperm whale                 | 11 | <i>Orcinus orca</i>               | 29 | Terns                        | 36 |
| False killer whale                | 14 | Pantropical spotted dolphin       | 24 | <i>Tursiops aduncus</i>      | 22 |
| <i>Feresa attenuata</i>           | 17 | <i>Peponocephala electra</i>      | 16 | <i>Tursiops truncatus</i>    | 23 |
| Fin whale                         | 3  | Petrels                           | 35 | <i>Ziphius cavirostris</i>   | 12 |
|                                   |    | <i>Physeter macrocephalus</i>     | 9  |                              |    |
|                                   |    | Procellariidae                    | 35 |                              |    |

Pacific  
Community  
Communauté  
du Pacifique



**PACIFIC COMMUNITY**

BP D5 • 98848 NOUMEA CEDEX • NEW CALEDONIA

Telephone: +687 26 20 00

Facsimile: +687 26 38 18

Email: [spc@spc.int](mailto:spc@spc.int)

<http://www.spc.int/>

Funding provided by the Japan Trust Fund of the Western and Central Pacific Fisheries Commission  
Prepared for publication at the Pacific Community headquarters, Noumea, New Caledonia, 2016  
and printed in Australia by Norwood Industries Pty Ltd.